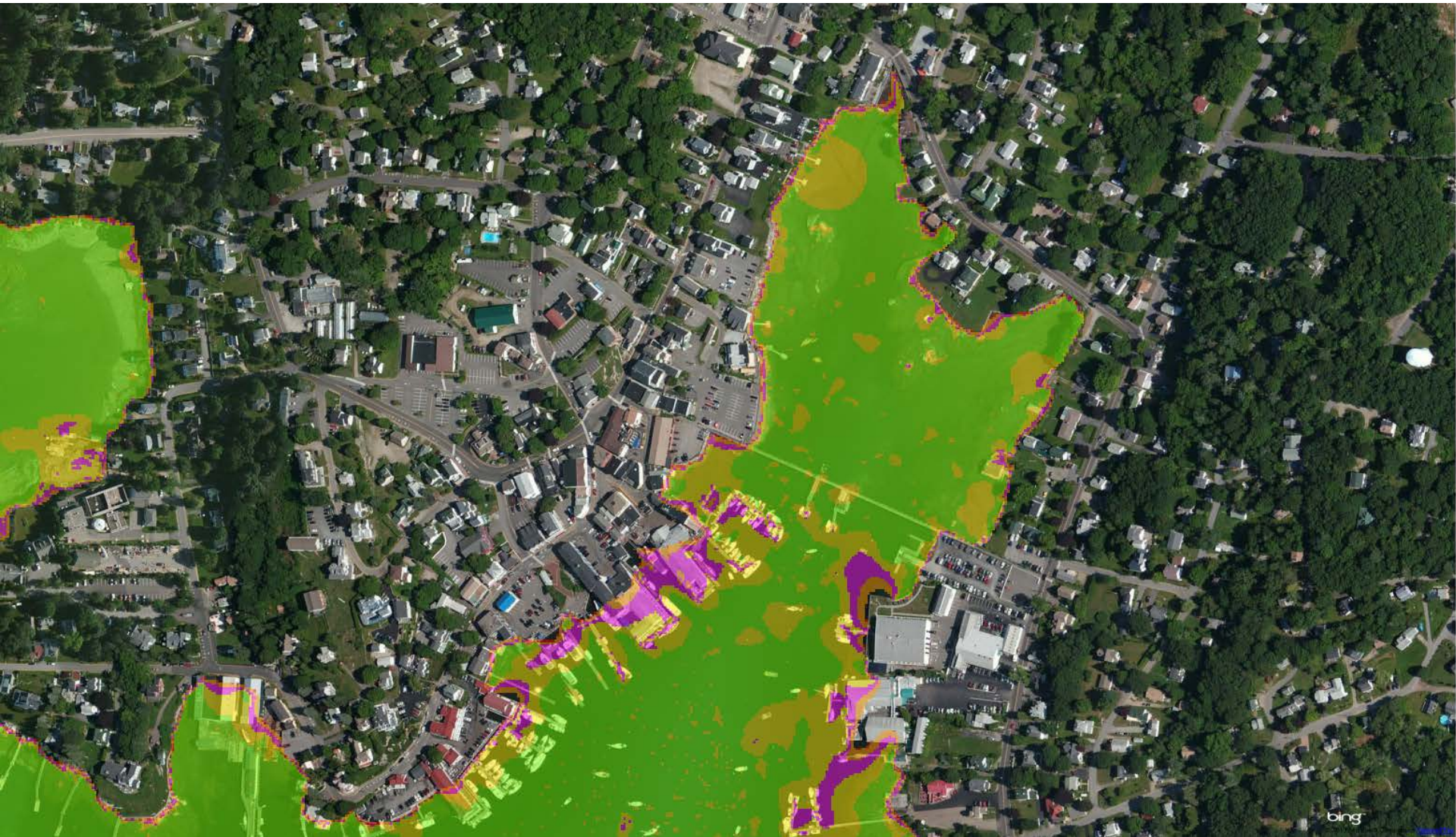


# Village HAT



Roads



Railroads



0-1



1-2



2-3



3-4



4-5



5-6



6-7



7-8



8-9



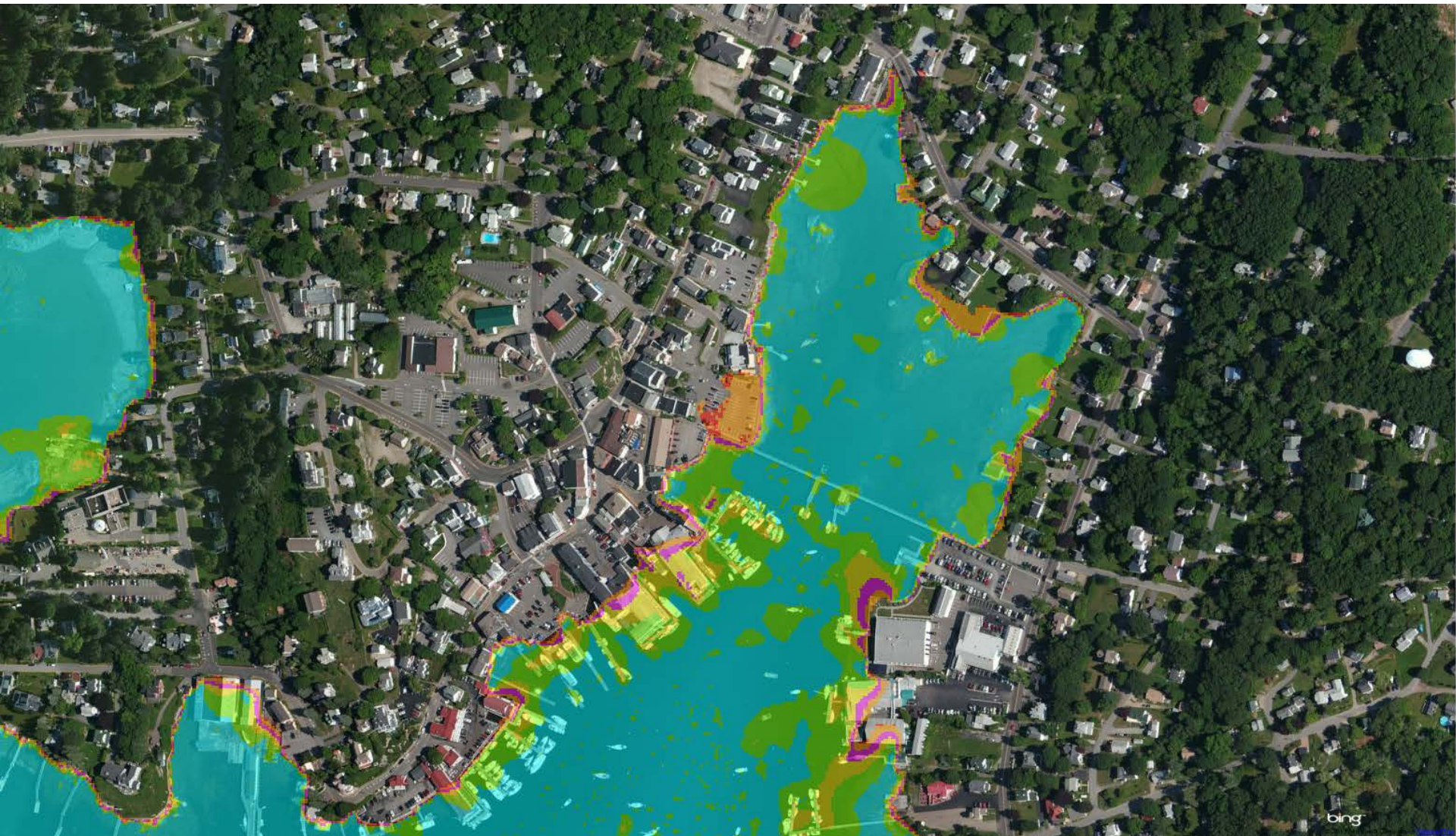
9-10



10-18



# Village HAT + 0.3 m



Roads



Railroads



0-1



1-2



2-3



3-4



4-5



5-6



6-7



7-8



8-9



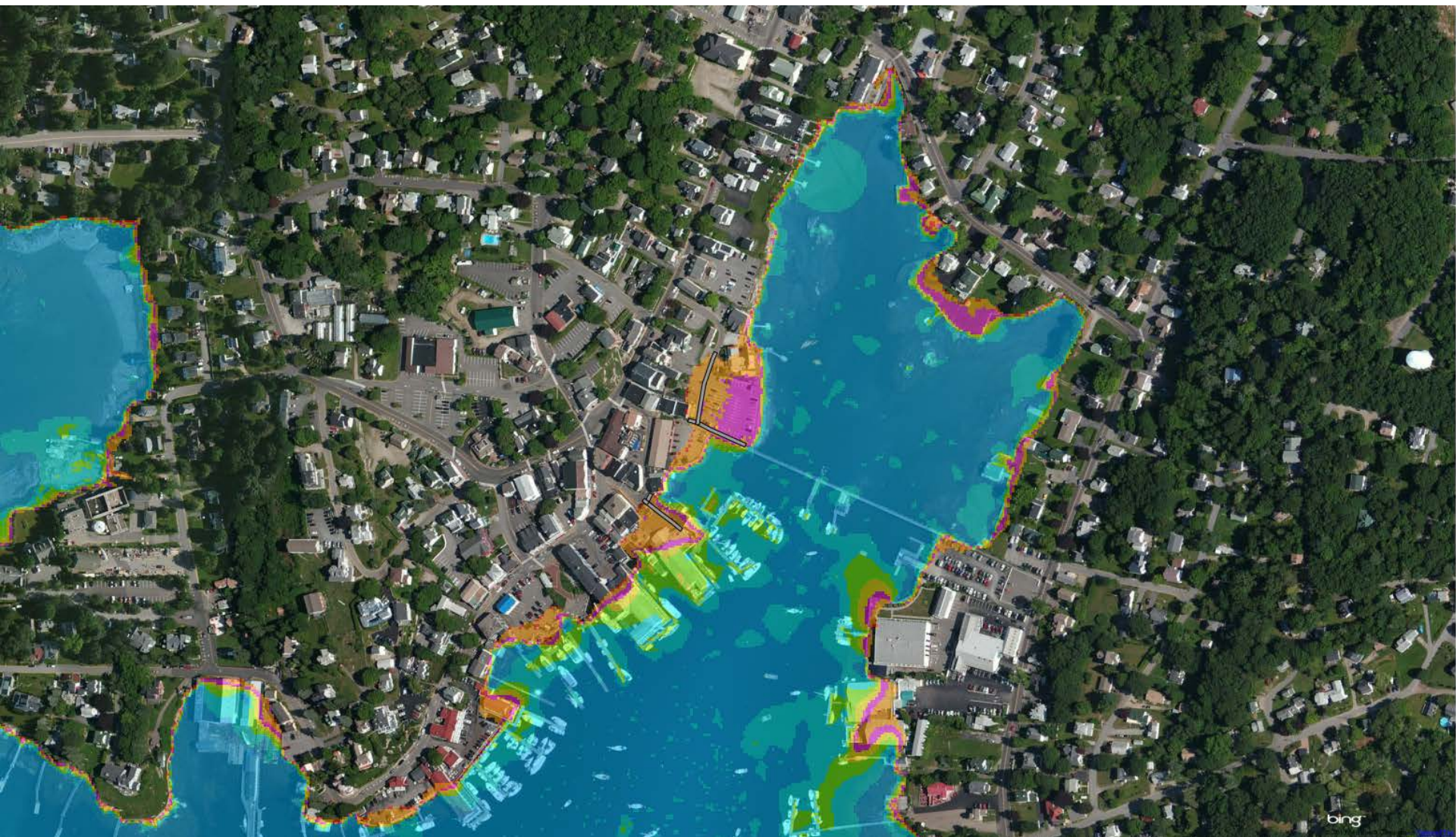
9-10



10-18



# Village HAT + 0.6 m



Roads



Railroads



0-1



1-2



2-3



3-4



4-5



5-6



6-7



7-8



8-9



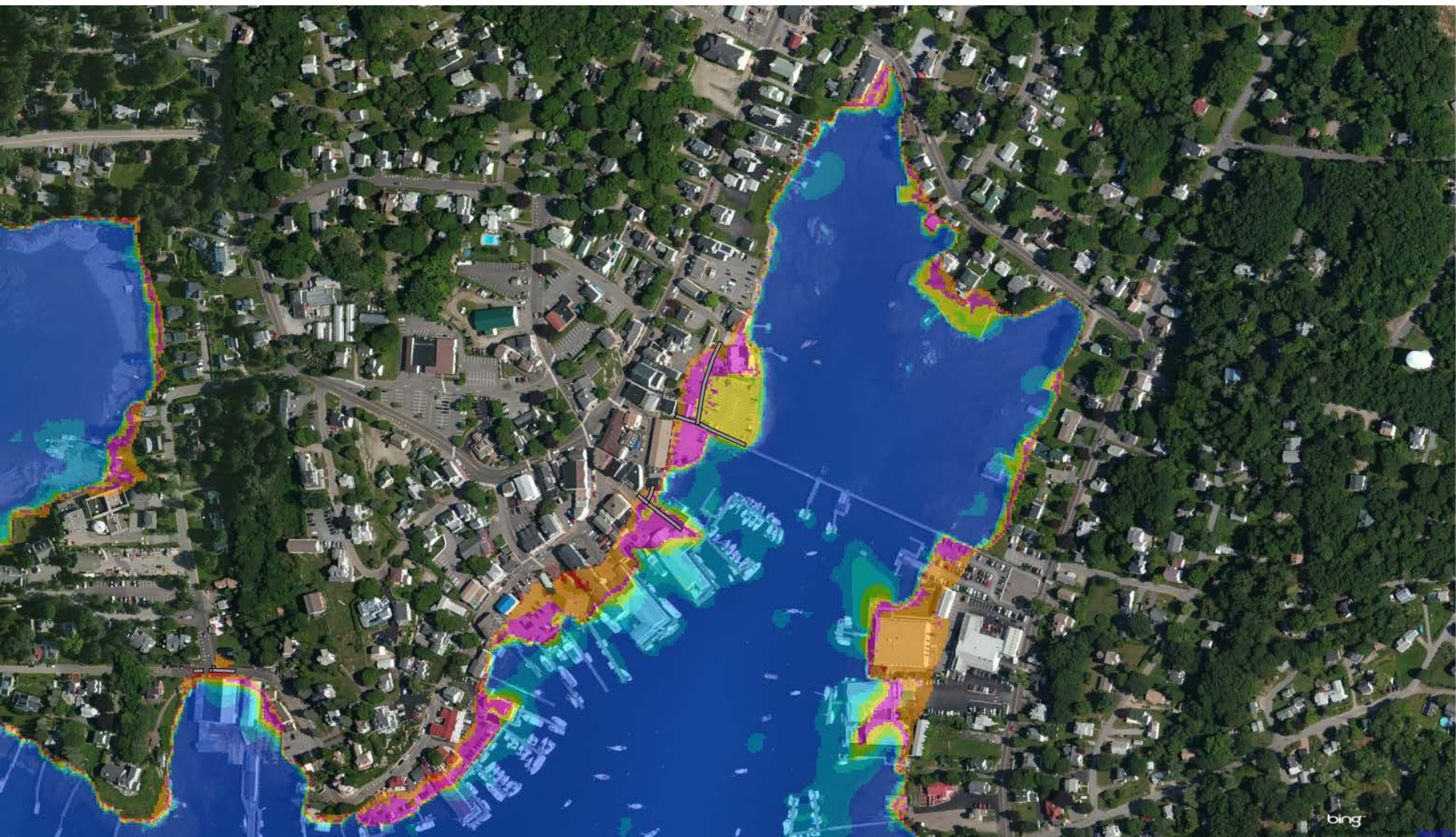
9-10



10-18



# Village HAT + 1.0 m



Roads



Railroads



0-1



1-2



2-3



3-4



4-5



5-6



6-7



7-8



8-9



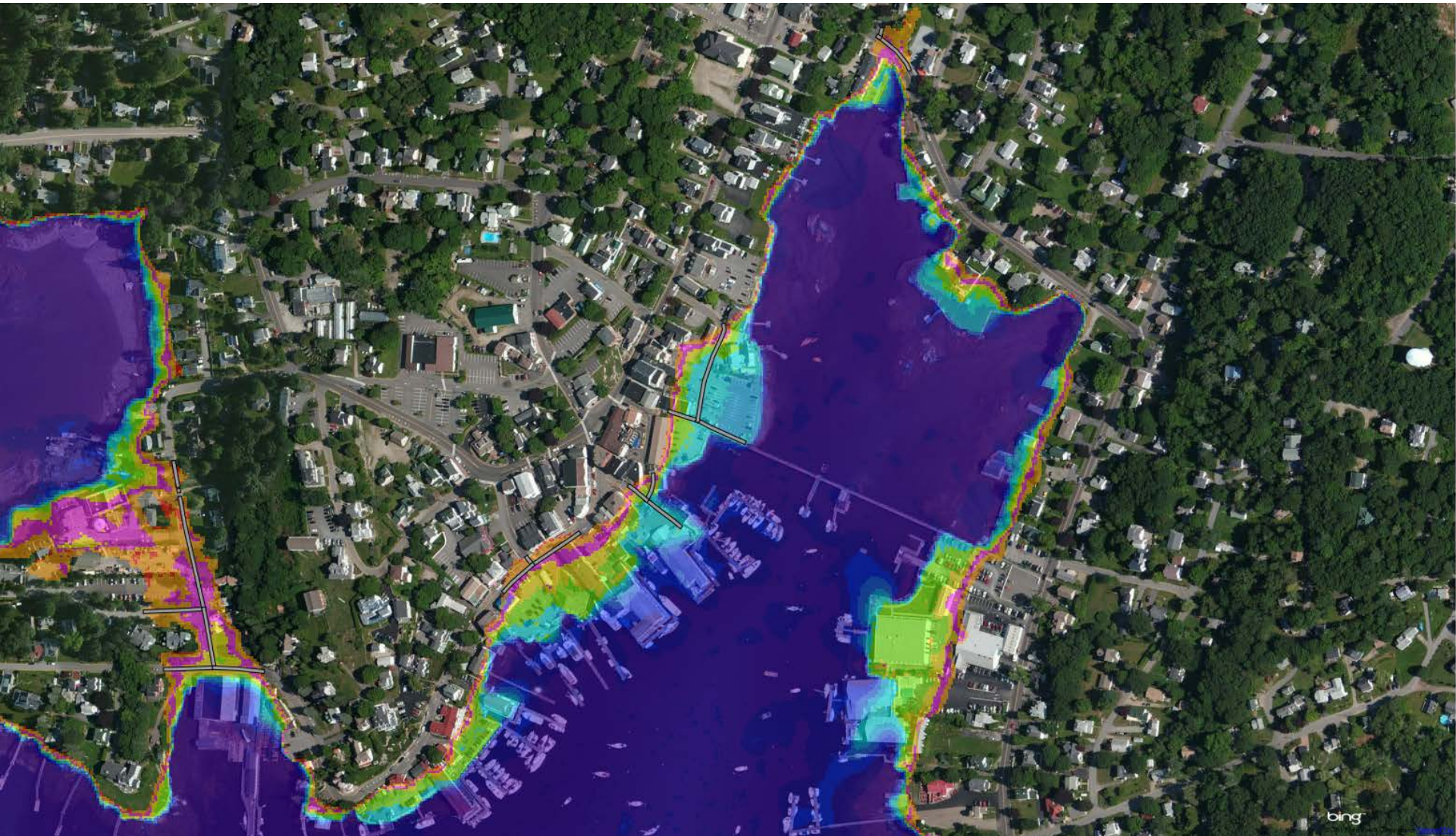
9-10



10-18



# Village HAT + 1.8 m



Roads



Railroads



0-1



1-2



2-3



3-4



4-5



5-6



6-7



7-8



8-9



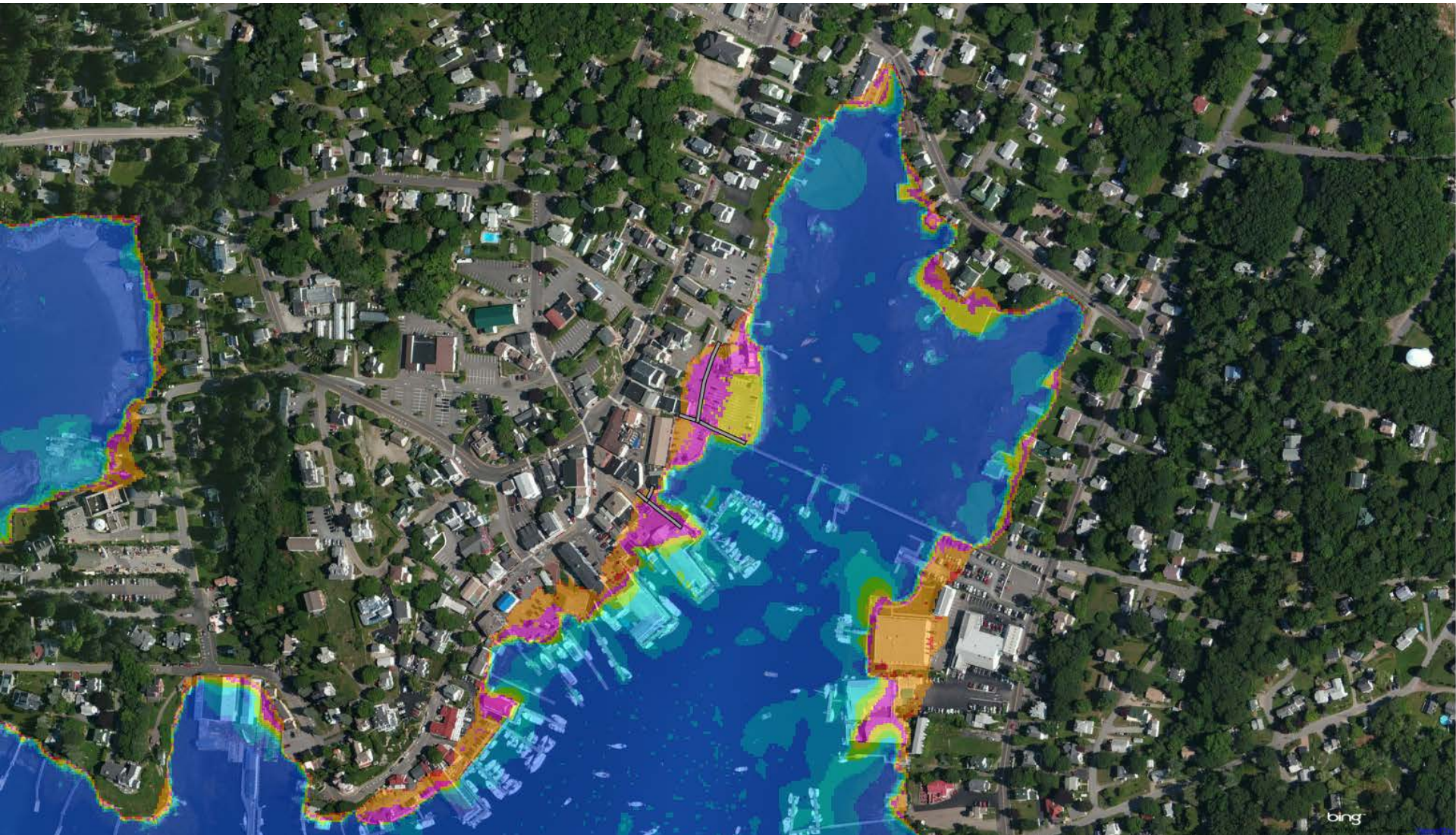
9-10



10-18



# Village 100-year storm



Roads



Railroads



0-1



1-2



2-3



3-4



4-5



5-6



6-7



7-8



8-9



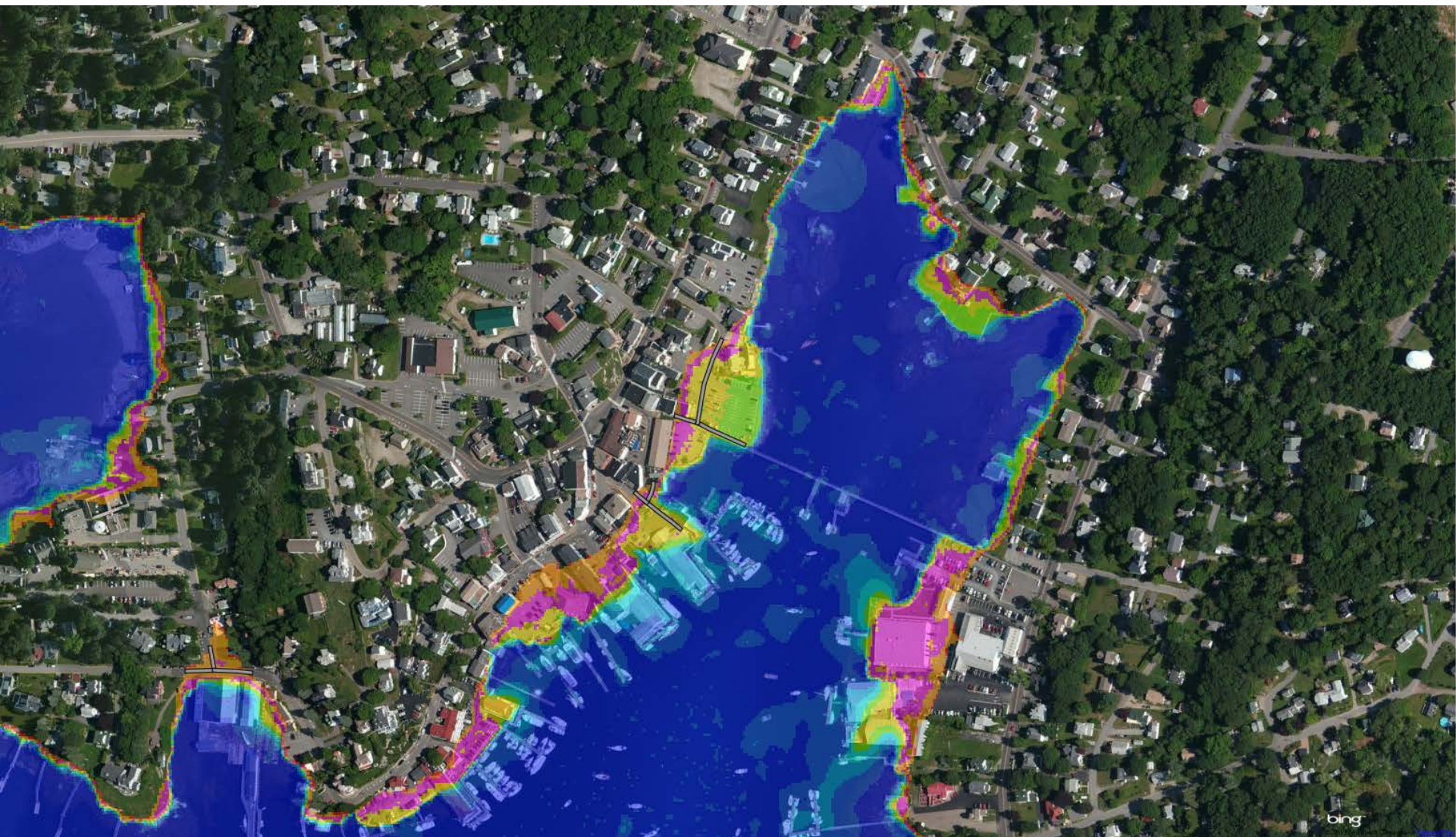
9-10



10-18



# Village 100-year storm + 0.3 m



Roads



Railroads



0-1



1-2



2-3



3-4



4-5



5-6



6-7



7-8



8-9



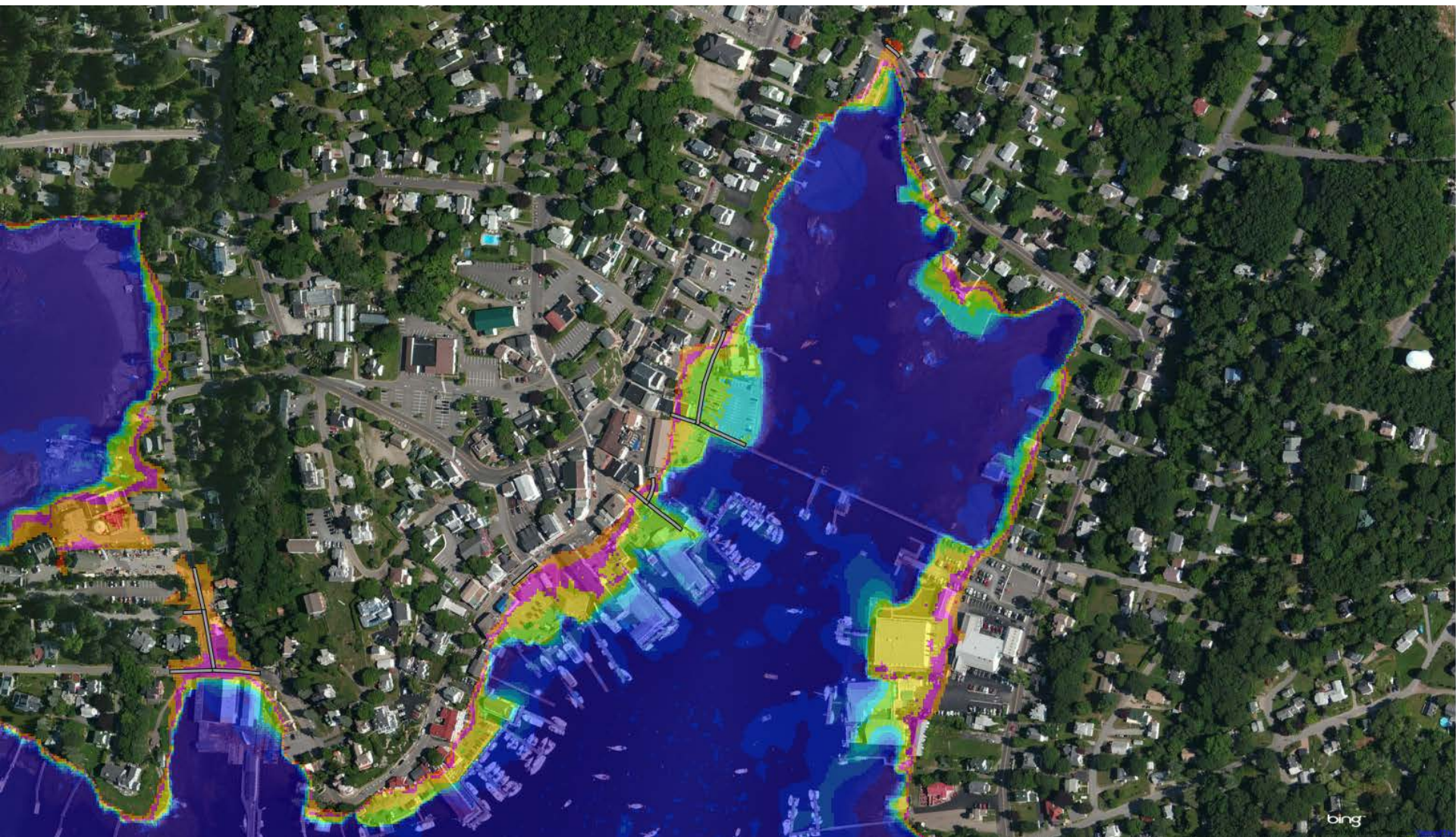
9-10



10-18



# Village 100-year storm + 0.6 m



Roads



Railroads



0-1



1-2



2-3



3-4



4-5



5-6



6-7



7-8



8-9



9-10

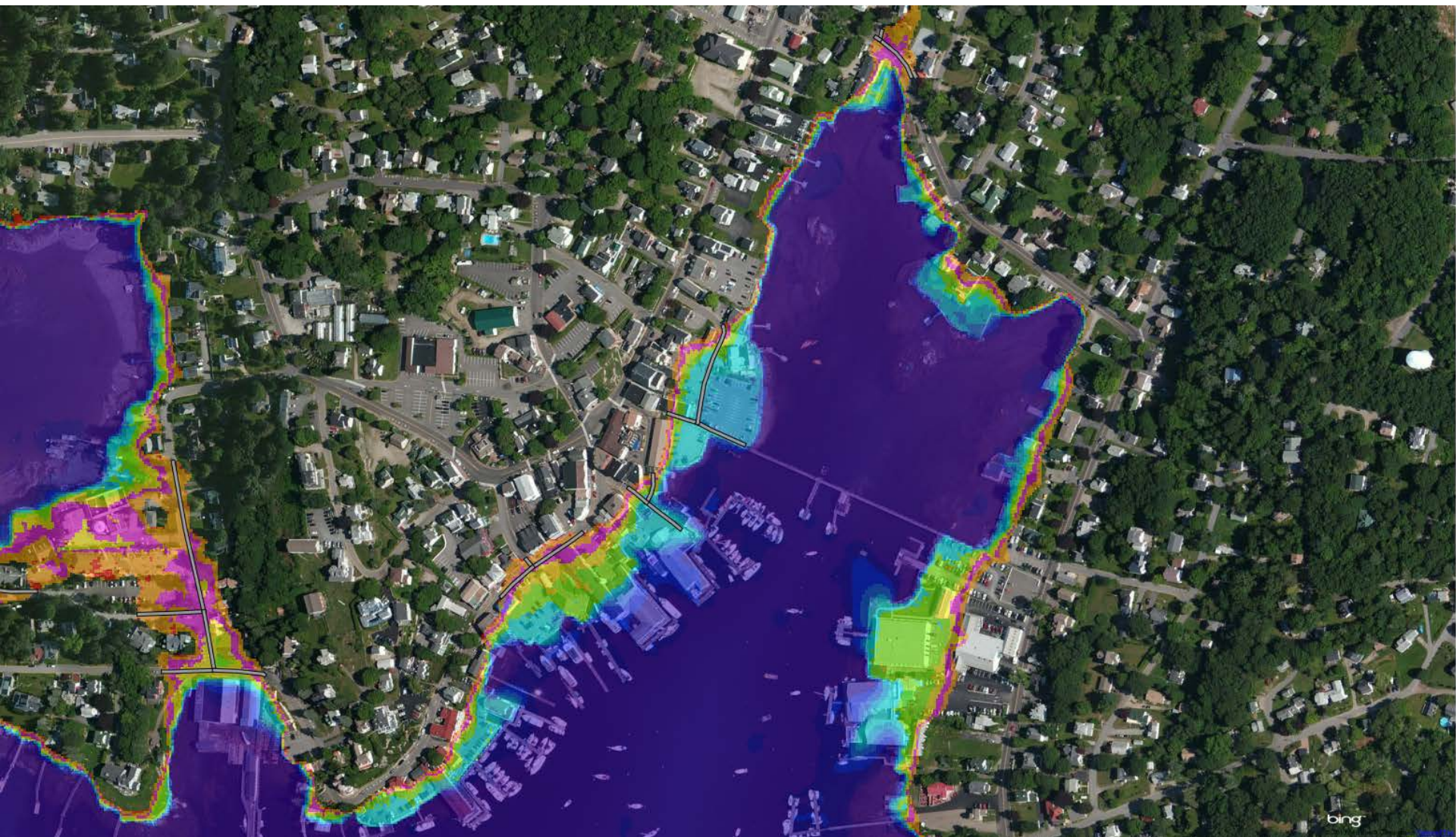


10-18





# Village 100-year storm + 1.0 m



Roads



Railroads



0-1



1-2



2-3



3-4



4-5



5-6



6-7



7-8



8-9



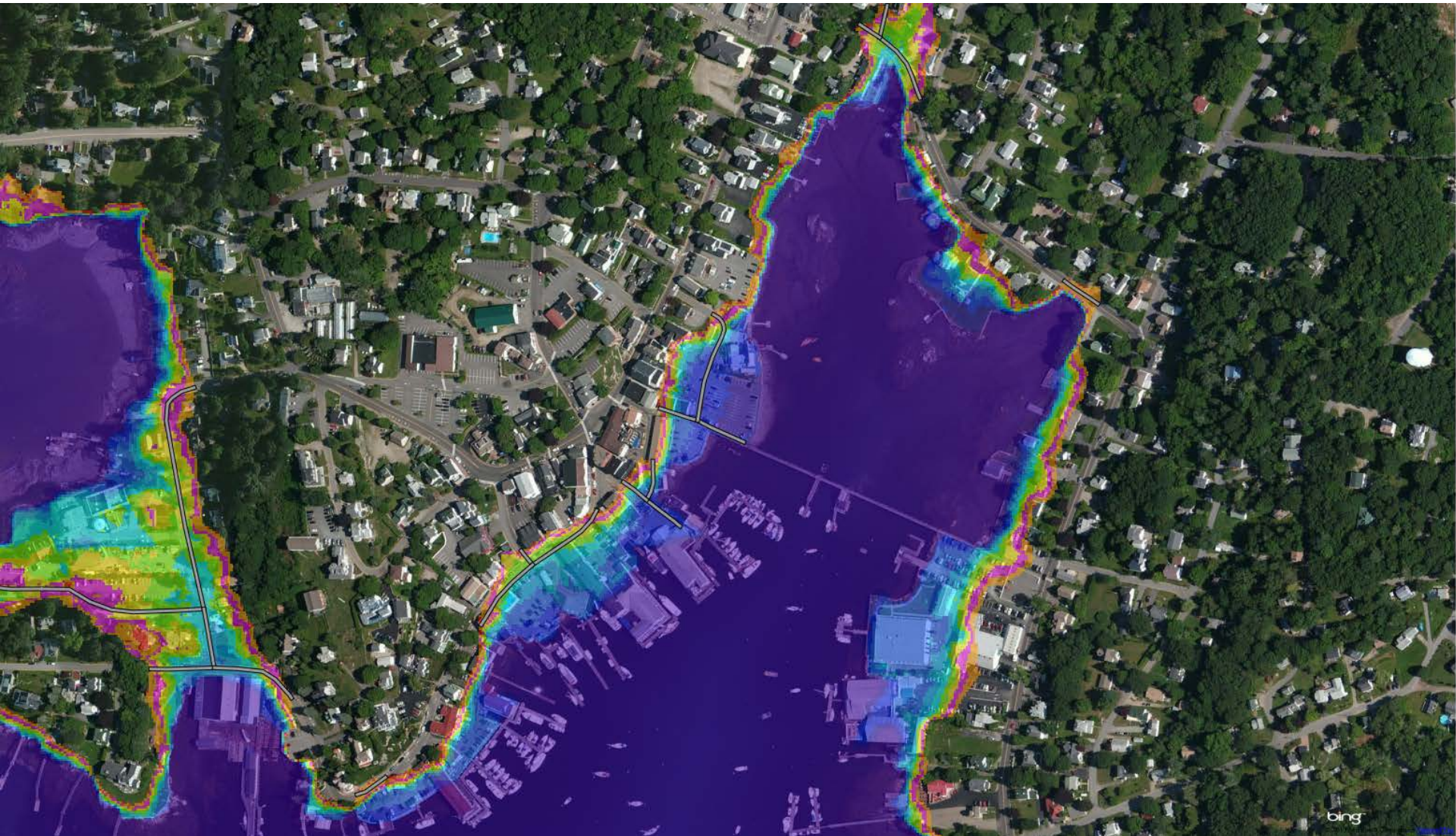
9-10



10-18



# Village 100-year storm + 1.8 m



Roads



Railroads



0-1



1-2



2-3



3-4



4-5



5-6



6-7



7-8



8-9



9-10



10-18

